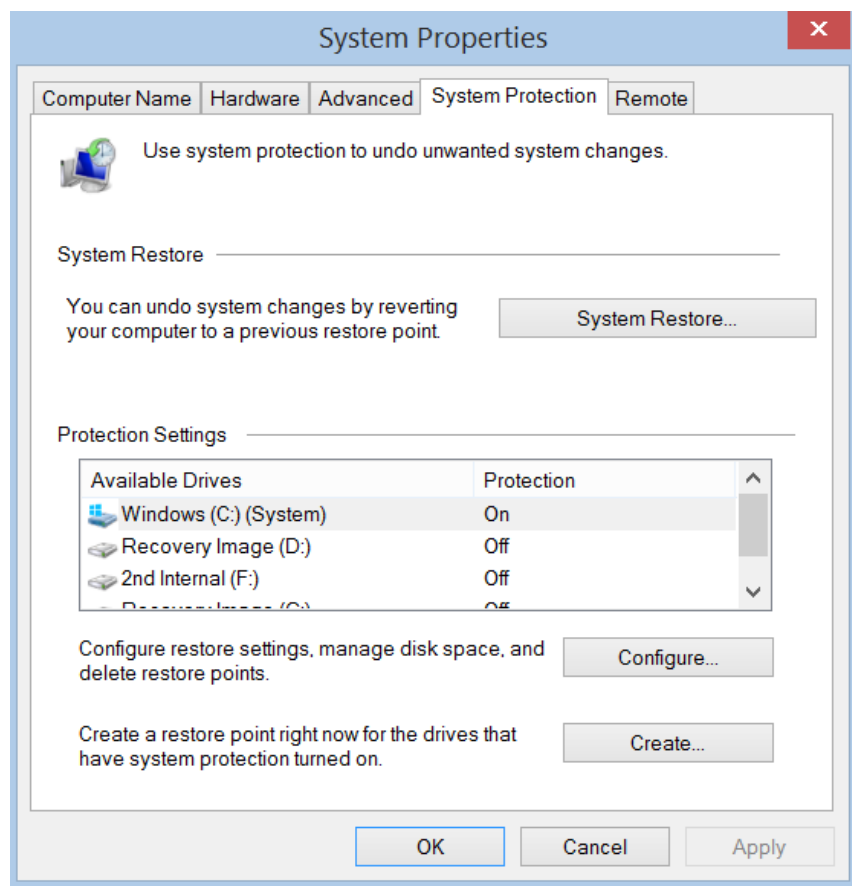


## Back Up Your Windows Registry with System Restore

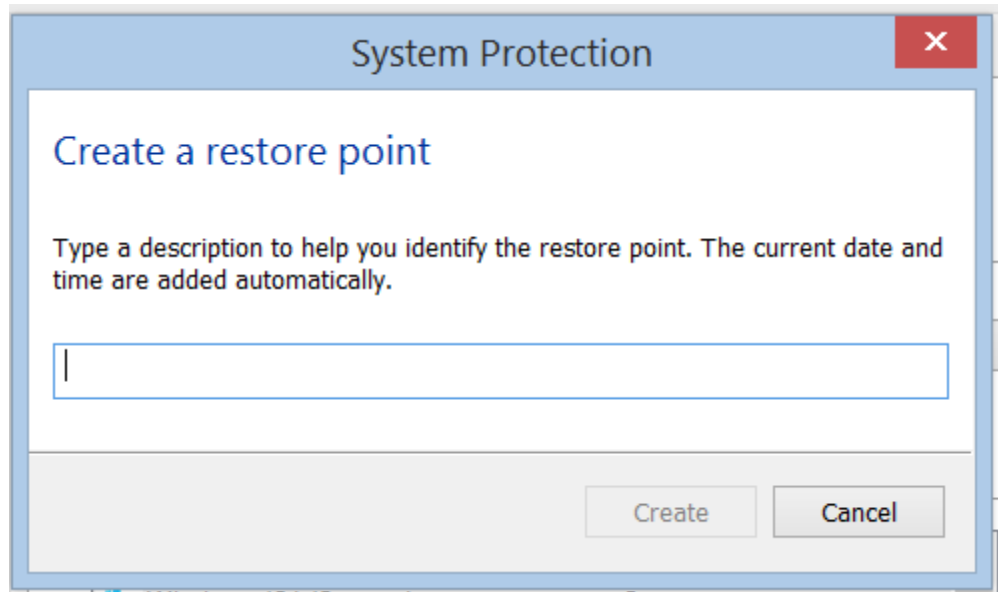
The Windows Registry is at the heart of the Windows operating system. The Registry is a group of system files constructed into a database that contains system-level and application-level parameters on both a machine and a user basis. If the Registry were to become corrupted it could render your system unusable, so it's important to take regular backups of it so you can restore a good copy of the Registry if necessary.

The best way to protect yourself is to take a backup of the complete Registry. This can be done by creating a restore point, since the Registry is included in restore points. To create a restore point, follow these steps:

1. From the Search box, type *restore point*.
2. Click *Create a restore point* from the list that appears in the column above.



3. Click on the *Create* button.



4. Select the Local Disk (under the Protection Settings group) and click the **Create** button. You will then be prompted to enter a description for the Restore Point. The date and time of the restore point you create will be inserted automatically.
5. At a later date, if you need to revert back to a restore point, follow steps 1 and 2 and click on the *System Restore* button.