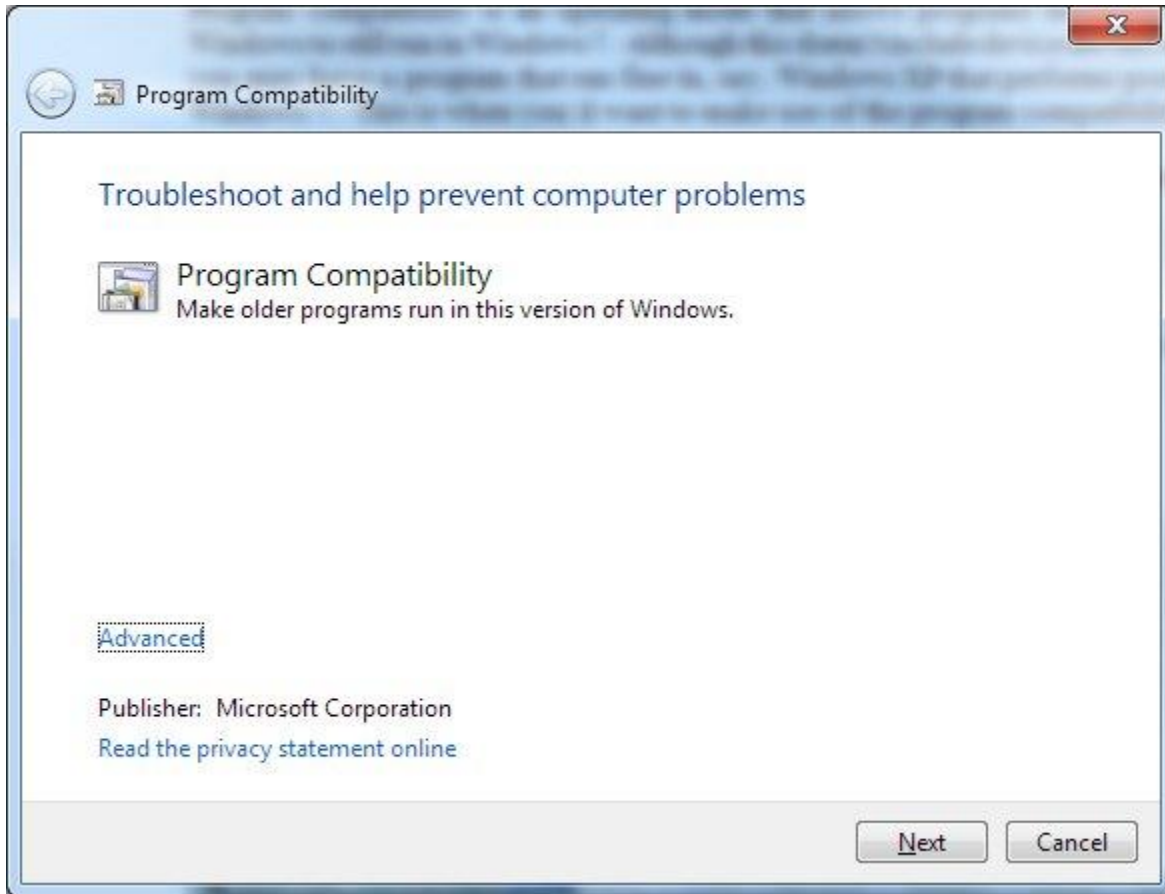


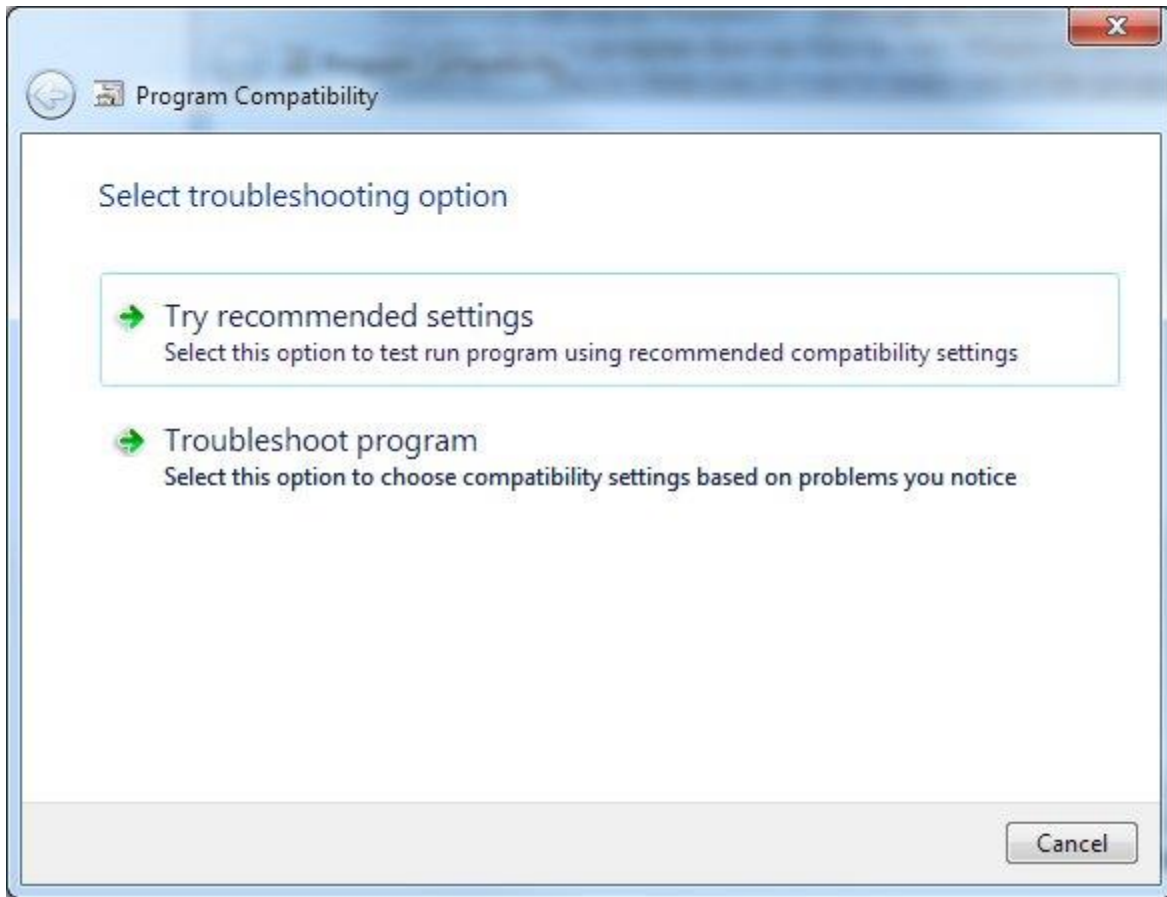
# Changing a Program's Compatibility Settings

(if an older application doesn't run or runs poorly)

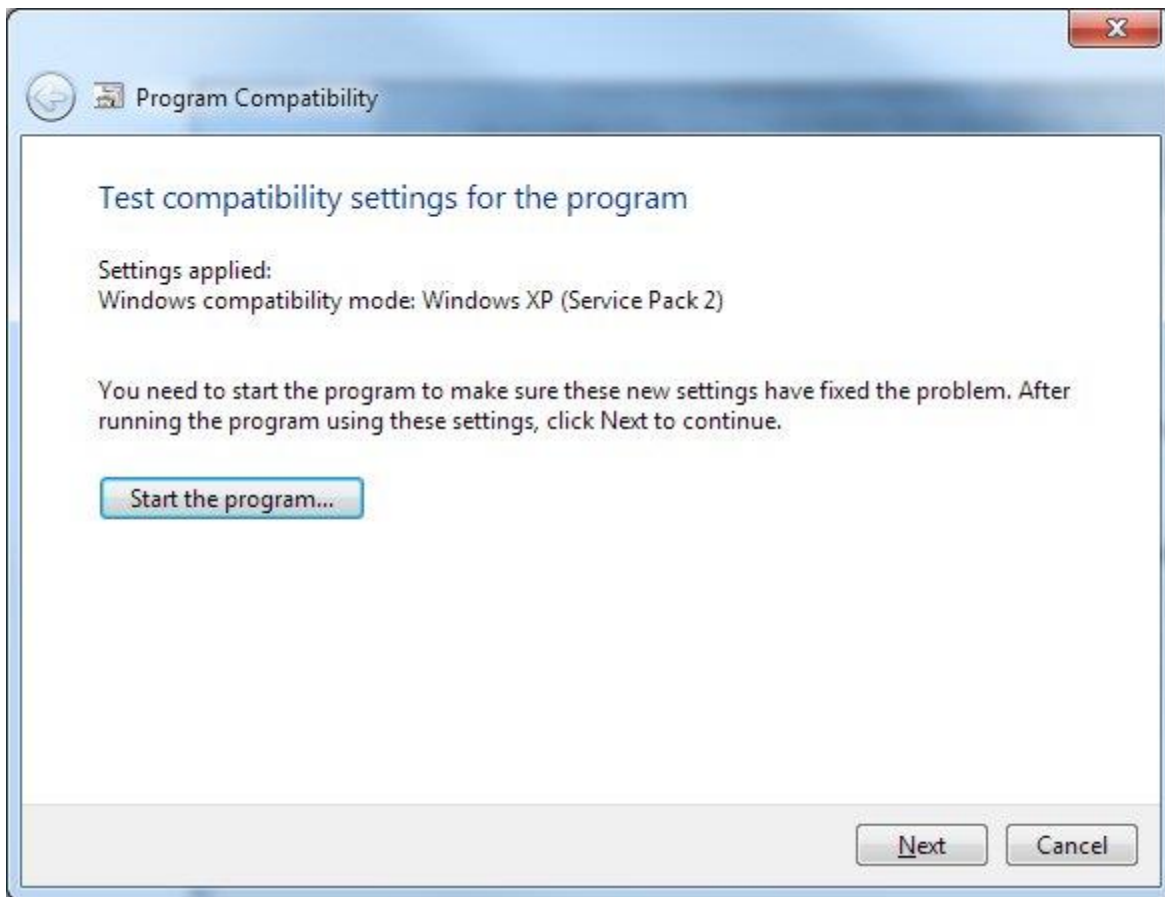
If an old Windows application doesn't run in Windows 10, or if it runs poorly, you may want to try changing its compatibility settings. You can do this by using the Compatibility Wizard. To start the wizard click the **Start** button, type *compatibility*, and press **Enter**. You'll shortly notice that the wizard starts.



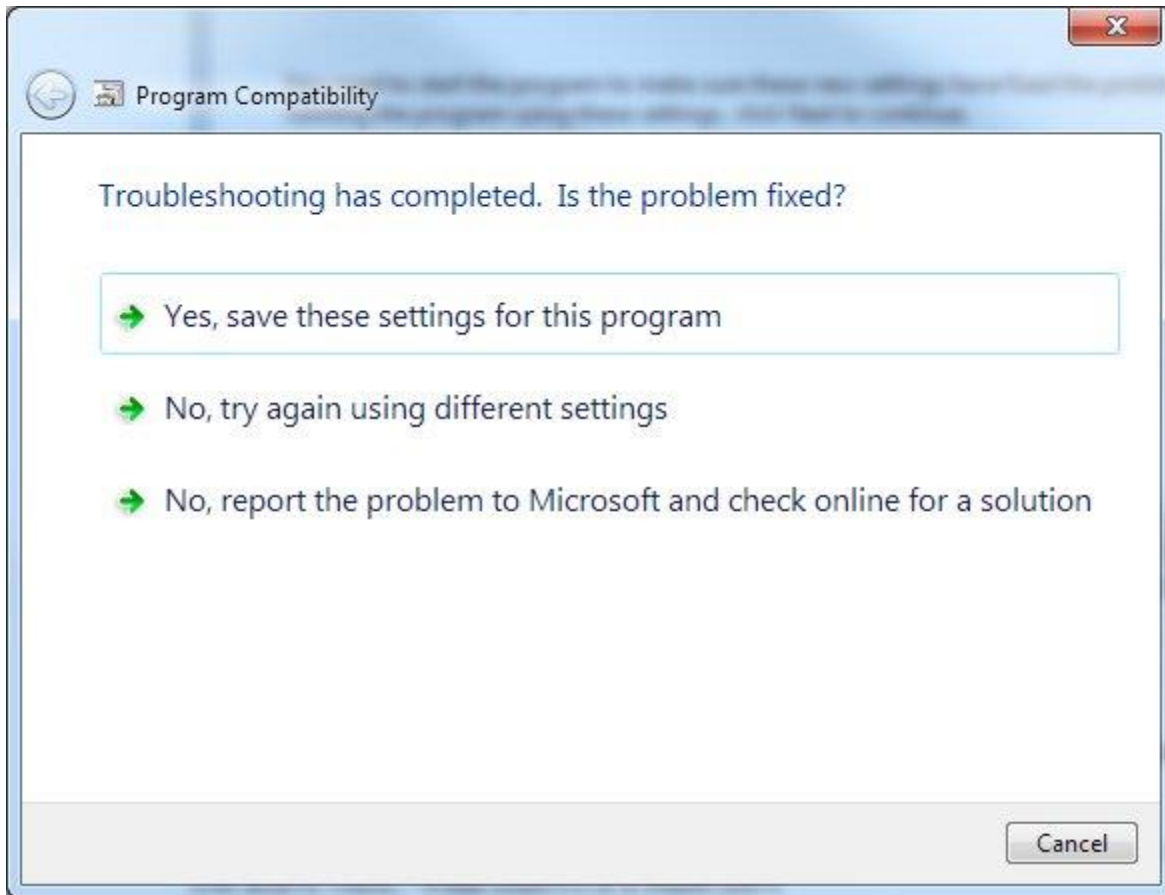
Clicking the **Next** button causes your computer to scan for programs that may have compatibility issues. Select the program you're having problems with and click the **Next** button. The wizard gives you the opportunity to decide how to troubleshoot the problem.



Click the *Try Recommended Settings* option to try running the program using the recommended compatibility settings. Based upon the particular program, the wizard applies certain settings and prompts you to start the program.



Click the **Start the Program** button to run the program. Test it to see if it's working properly, then click the **Next** button. This takes you to the final screen of the wizard.



If the program is working properly, click the top link of the final screen. If it's not working properly and you want to try it again with different compatibility settings, click the second link of the final screen. If it's not working properly and you want to search for a solution online, click the third link of the final screen. Depending upon what you click, the Wizard will either exit or enter a troubleshooting dialog whereupon you can answer a variety of questions determined by what particular problems you're having. At the end, settings appropriate to the program will either have been established, or it's likely that the program simply cannot be made to run properly.