

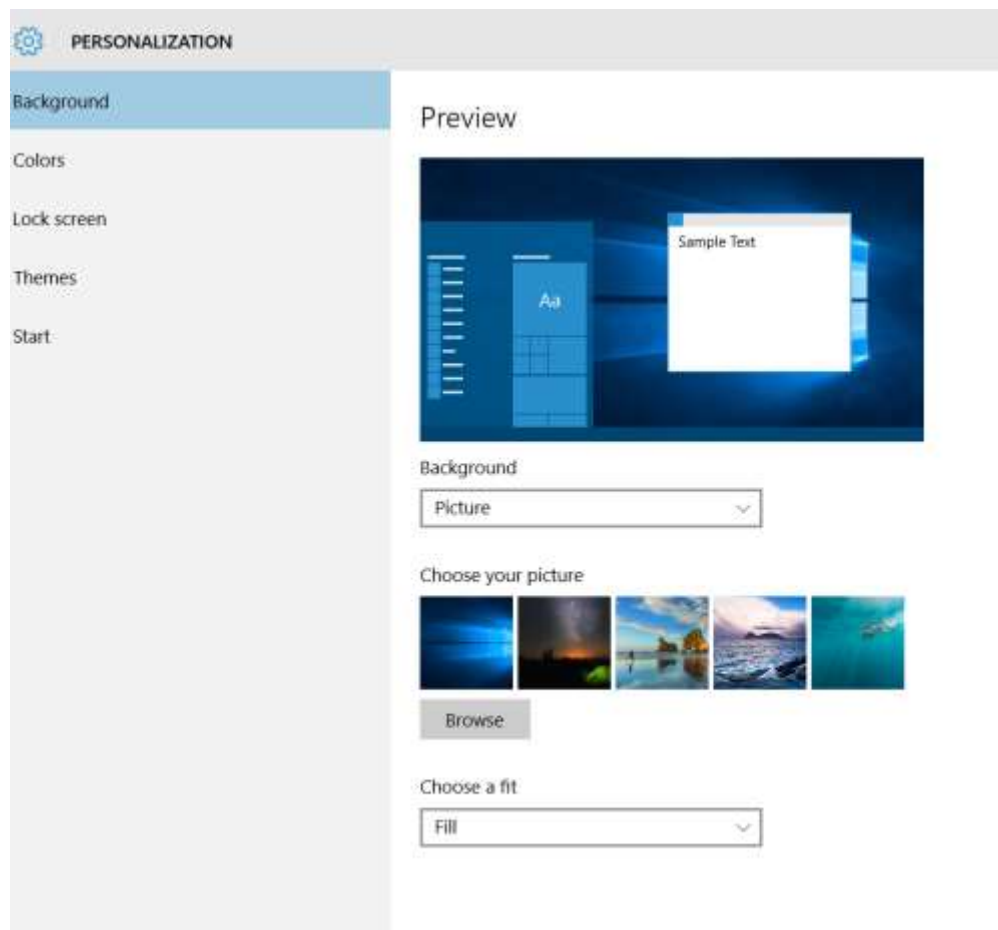
How to change the Desktop's background

The default desktop background or wallpaper in Windows 10 is impressive, but not all users want to keep the same desktop background forever, and many want to change the default desktop background to an image of their choice (including family photos).

When you right-click on the desktop and click the **Personalize** option, the *Background* link will open. From there, you can designate your desktop background as a single picture, solid color, or slideshow.

To set up a desktop slideshow or change the desktop background, follow the instructions below:

Tip: By default, Windows 10 syncs your current desktop background across all your PCs if you're using the same Microsoft account on all PCs. You can turn off this feature under Settings app to avoid having the same desktop background on all PCs. (**Windows + I** > **Accounts** > **Synch your settings**).



Method 1 Change Windows 10's desktop background

1. Right-click on the Desktop to reveal the context menu and then click the **Personalize** option to open Personalization section of Settings app.
2. On the right panel of the next screen, you can see the preview of the current desktop background. To change the wallpaper, under the Background drop-down menu, select the **Picture** option.
3. Click the **Browse** button under **Choose your picture** section to browse to the picture that you want to set as desktop background, select the picture, and then click **Choose picture** button to change the desktop background. That's it! The preview will now show the new desktop background.

Method 2: Another easy method to change wallpaper

1. Open File Explorer (Windows +E) and then navigate to the folder containing the picture that you want to set as your desktop background.
2. Right-click on the target picture and then click **Set as desktop background**.

Method 3: Set up a desktop slideshow

1. Right-click on the Desktop, click the Personalize option to open Personalization settings.
2. On the right panel, select the **Slideshow** option from the Background drop-down menu, and click **Browse** button to choose a folder containing your favorite pictures. (All the slideshow pictures must reside in the same folder.)
3. To change slideshow interval time, select a time interval from *Change picture every* drop-down box.