

## **WINDOWS DEFENDER NOW PROVIDES LIMITED PERIODIC SCANS**

Windows 10 comes with Windows Defender, a built-in antivirus tool to help protect your PC from malware. In addition, Windows Defender can now keep protecting your PC by providing a second layer of protection, even if you install another antivirus.

Generally, you aren't supposed to run two always-on antivirus programs at once. As such, Windows Defender normally disables itself if you install another antivirus, getting out of the way. But a new option allows Windows Defender to provide some help without providing full real-time protection. You can also manually perform scans of your entire system or specific folders.

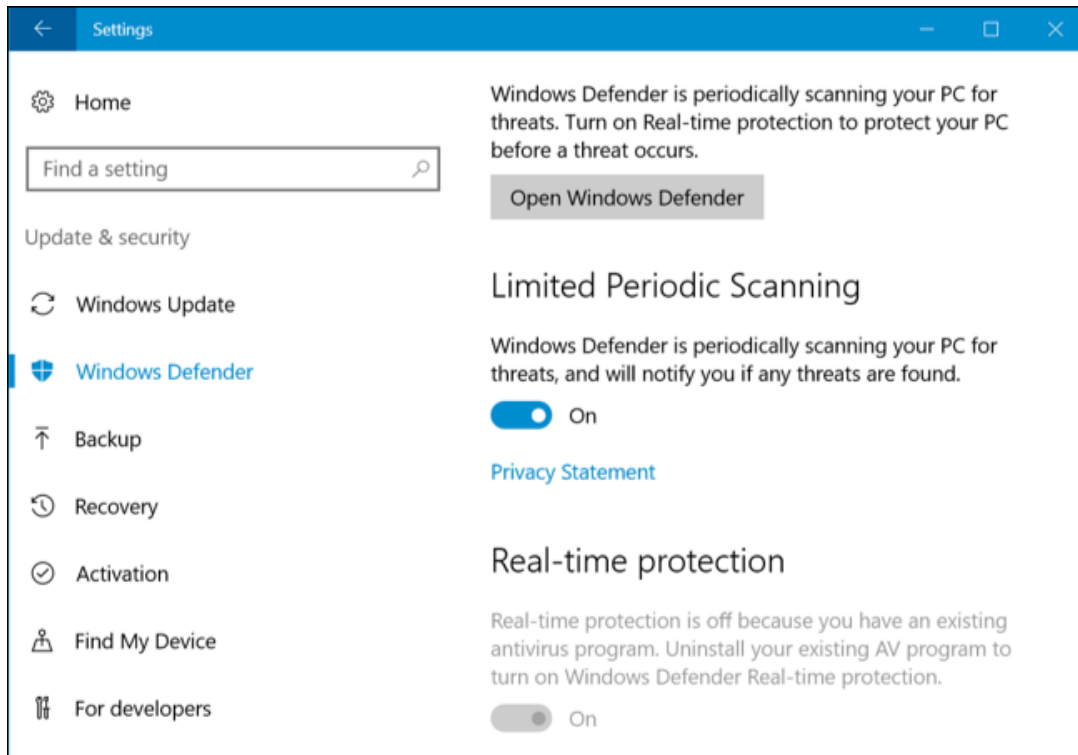
### **How to Enable Limited Periodic Scanning**

This option is named "limited periodic scanning". Enable it, and Windows Defender will occasionally perform a scan to check for any malware that your primary antivirus product missed. However, it's not enabled by default.

You'll find this option under Windows Defender's Settings in the Settings app. To access it, open the Start menu and select "Settings" (alternative= Windows key + I). Click on Update & Security, then Windows Defender. From there, enable the "Limited Periodic Scanning" feature.

You can only enable this feature if you're using another antivirus program. If you haven't installed another antivirus program, Windows Defender is already enabled and helping protect your computer with both real-time and scheduled system scans.

Windows Defender will automatically be updated with the latest antivirus applications through Windows Update.



## How to Perform a Manual Scan

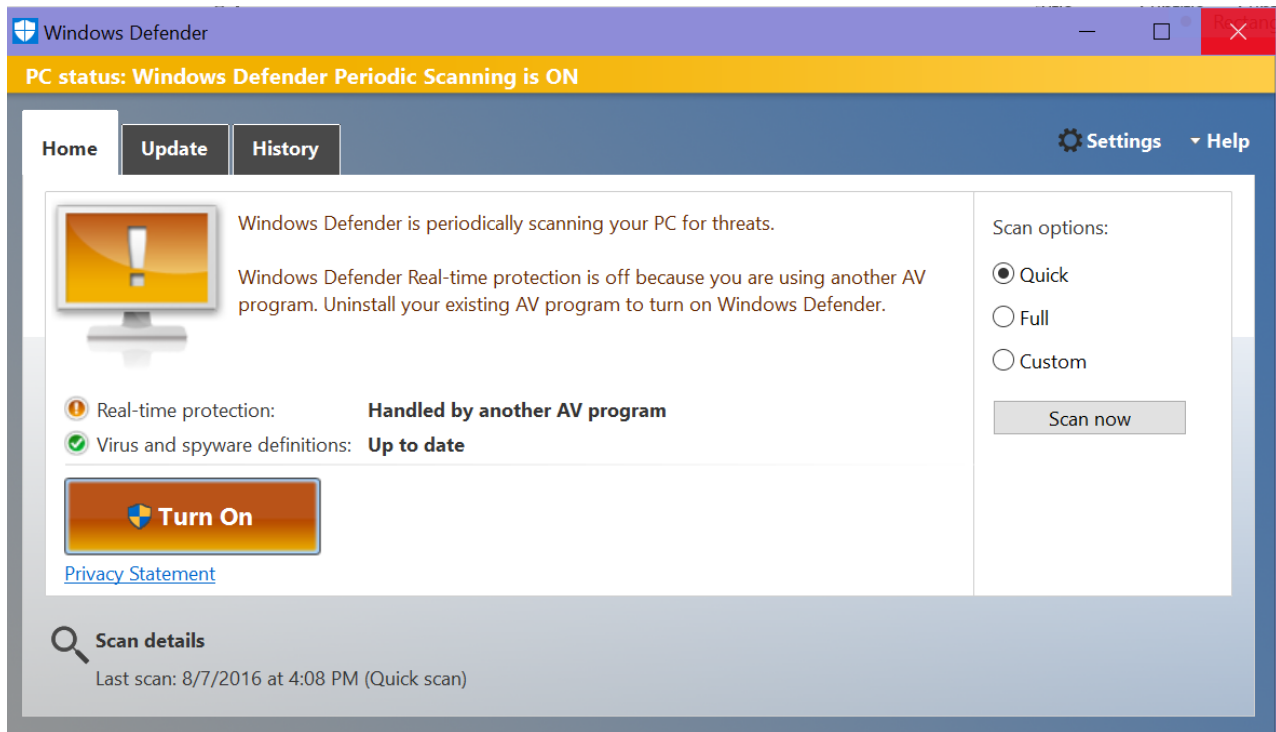
You can also perform a manual scan of your entire computer or specific folders with Windows Defender, even if you're using another antivirus program. Windows Defender can provide a second opinion that might catch something missed by your normal antivirus program.

To do this, launch Windows Defender. Go to Settings (Windows + I), then Update & Security, followed by Windows Defender, and finally Open Windows Defender. From there, you can launch the application.

Assuming that you've set up limited periodic scanning, you'll see a message saying "Windows Defender Periodic Scanning is ON", but that real-time protection is handled by another antivirus program.

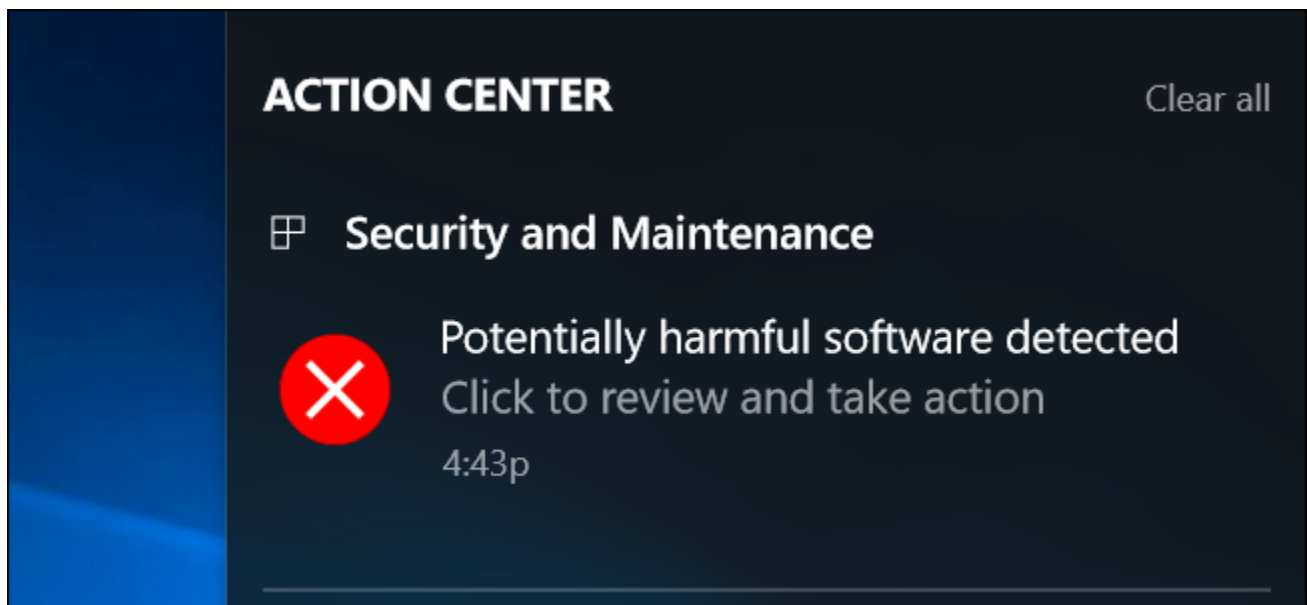
To perform a manual scan, select "Quick" for a fast scan, "Full" for a deep system scan, or "Custom" for a scan of only the folders of your choose. Click "Scan Now" to start the scan.

Windows Defender should automatically be updated with the latest antivirus definitions, but you can click the "Update" tab here and manually check for updates before scanning, if you like.

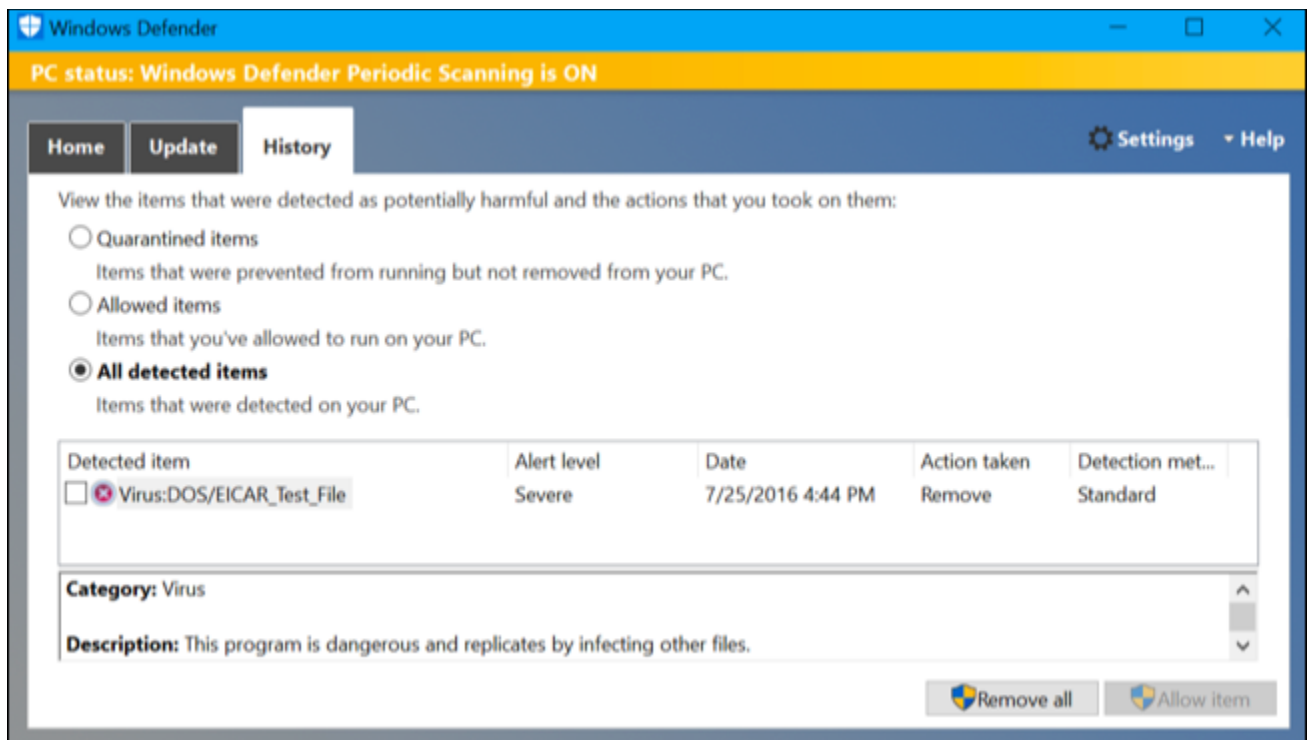


## If Windows Defender Detects Malware...

If malware is detected through either type of scan, you'll see a notification (Windows + A) saying potentially harmful software was detected.



You can view a list of malware found by Windows Defender through the History tab in the Windows Defender window.



If you regularly notice malware getting through your primary antivirus and being caught by Windows Defender, you should probably switch to another primary antivirus program.